

ThinSoft

THINSOFT PTE LTD

23, Tai Seng Drive, #06-00, Singapore 535224 - Fax (65) 6289-7308

www.thinsoftinc.com

BeTwin 2000/ XP User Manual

Document Version 2.0

Copyright © ThinSoft Pte Ltd 2003 - 2012

BeTwin 2000/XP User Manual

© Copyright 2003 – 2012 ThinSoft Pte Ltd All rights reserved.

ThinSoft Pte Ltd
23 Tai Seng Drive
#06-00
Singapore 535224

Fax: (65) 6289-7308

This document is being furnished by ThinSoft Pte Ltd for information purpose only to licensed users of the BeTwin® software product. Efforts are made to ensure the accuracy of the information presented, but is subject to change without prior notice. Changes, if any, will be incorporated in future releases.

BeTwin® are the registered trademark of ThinSoft Pte Ltd.

Other brand and product names are the trademarks or registered trademarks of the respective holders. Microsoft is a registered trademark and Windows, Windows 2000, Windows XP, are the registered trademark of the Microsoft Corporation.

IBM and PC/AT are the registered trademarks of International Business Machines Corporation.

No part of this document may be reproduced for commercial purposes unless prior permission is obtained from the copyright holder.

Visit our Web Site at <http://www.thinsoftinc.com>

Table of Contents

1. Introduction to BeTwin 2000/XP	5
2. Installation Overview	6
3. Hardware Guidelines	7
4. BeTwin Installation	8
4.1. Installing the BeTwin Hardware	8
4.2. Installing the Video Drivers for Windows 2000 Professional	11
4.3. Installing the Video Drivers for Windows XP Professional (32-bit) or Home Edition	16
4.4. Enabling the Multiple Display Monitor feature under Windows 2000 Professional	20
4.5. Enabling the Multiple Display Monitor feature under Windows XP Professional (32-bit) or Home Edition	22
4.6. Installing the BeTwin Software	24
4.7. Configuring the BeTwin Station Using Configuration Wizard	26
4.8. Configuring the BeTwin Station Manually	28
4.9. Logging onto the station automatically under Windows 2000 Professional	30
4.10. Logging onto the station automatically under Windows XP Professional (32-bit) or Home Edition	33
4.11. Using the Locator Buttons	35
4.11.1. Keyboard/Mouse Locator	35
4.11.2. Sound Device Locator	35
4.12. Using the BeTwin Control Center	36
4.12.1. Station Mode	36
4.12.2. User Mode	36
4.12.3. Message Mode	38
4.12.4. Eventlog Mode	38
4.12.5. Menu Options	39
5. Logging onto the Computer for the First Time	43
6. Logging onto the Computer as a Different User	44
7. Shutting Down Windows in Windows 2000 Professional	45
8. Shutting Down Windows in Windows XP Professional (32-bit) or Home Edition	46
9. Sharing the Internet Connection in Windows 2000 Professional	47
9.1. Simultaneous Independent Sharing	47
9.2. Setting up Dial-up Connection	47
10. Sharing the Internet Connection in Windows XP Professional (32-bit) or Home Edition	48
10.1. Simultaneous Independent Sharing	48
10.2. Setting up Dial-up Connection	48
11. Adding Software or Hardware	49

12. Problem Solving	50
12.1. General Guidelines	50
13. Registration/Licensing	51
13.1. Demo Version	51
13.2. Internet Registration	51
14. Updating BeTwin	53
15. Technical Support	54

1. Introduction to BeTwin 2000/XP

Product Description

BeTwin 2000/XP is the software that allows multiple users to simultaneously and independently share a personal computer running Windows 2000 Professional, Windows XP Professional (32-bit) or Home Edition. Installation is simple. Install a second display adapter (video card / USB video adapter) and connect it to the second monitor. Plug in a USB mouse, USB keyboard and, optionally, USB speakers. Finally, install the BeTwin 2000/XP software.

Additional video cards or USB video adapters, monitors, mice, keyboards and USB speakers can be installed to support up to eight additional users.

Hardware Requirements

BeTwin requires an available PCI / PCI-E or USB slot to install the video card or USB video adapter. At least one USB Connector must be available for the keyboard and mouse.

Hardware Options

BeTwin uses a standard PCI /PCI-Express card / USB video adapter for the additional user. In order to be used by BeTwin, the video card must support the Windows 2000 or Windows XP Multiple Display Monitor feature. If you have any questions, ask the vendor of the video card if it supports “Windows 2000 or Windows XP Multiple Display Monitor” feature.

A monitor is required for the additional user. Alternately, if you have installed a video card that supports a “TV out” option, a television can be used instead.

The additional user requires a USB keyboard and mouse. Any USB keyboard and mouse can be used. Many USB keyboards allow additional USB devices to be connected directly to the keyboard. These are recommended, as they increase the number of USB devices that can be attached to the system.

The PCI /PCI-Express card/ USB VGA adaptor, monitor, USB keyboard and USB mouse are not sold with BeTwin software and must be purchased separately.

Manufacturer’s Notice

The BeTwin allows multiple users to simultaneously and independently share the same hardware and software on a single Personal Computer. Some software is licensed for use on a single computer while other software may be licensed for single or multiple users. It is the responsibility of the BeTwin purchaser/user to read and comply with the licensing agreements of any software that may be used on a BeTwin Station.

2. Installation Overview

Installation is simple. By following these steps, a two- or nine-users system should take less than 30 minutes to set up. Each step is explained in detail in the following pages.

Step 1.

Install the additional display adapter, with Multiple Display Monitor feature enabled, following the manufacturer's instructions.

Step 2.

Connect the USB mouse and keyboard following the manufacturer's instructions.

Step 3.

Test the hardware to ensure that it works properly with Windows.

Step 4.

Install the BeTwin 2000/XP software.

Terminology

The original computer display, keyboard and mouse are used by one user. This user is called the *host*. A display, USB mouse and USB keyboard are added for the additional user. This user is called the *station*.

3. Hardware Guidelines

CPU

A Pentium II 333 MHz processor is the minimum recommendation. For best performance, a Pentium III 450 MHz or faster is suggested. Equivalent AMD processors are also supported. The computer must have at least one available USB port.

Minimum

- Pentium II 333 MHz Processor

Recommended

- Pentium III Processor at 450 MHz or faster

Memory

192 Megabytes of RAM is the minimum requirement for 2 users.
64 MB of additional RAM is recommended for each station.

Minimum

- 192 MB

Recommended

- Add 64 MB per station

Station Hardware

Each user requires a PCI /PCI-Express /USB video adapter or card . The video card must support the Windows 2000 or Windows XP Multiple Display feature. Most recent video cards do support this function. If you have any concerns, it is best to contact the card vendor. The BeTwin user also requires a USB keyboard and USB mouse. If sound is required at the station, USB speakers can be used.

Monitor

- PCI /PCI-Express card / USB video adapter
- SVGA monitor

Keyboard

- USB connector

Mouse

- USB connector

Speakers

- USB connector

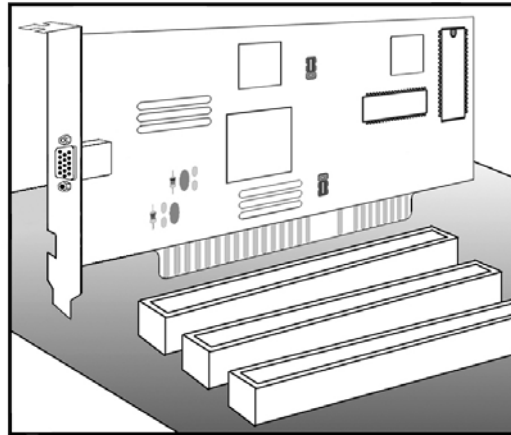
4. BeTwin Installation

4.1. Installing the BeTwin Hardware

Before installing the BeTwin 2000/XP software, you must first install the additional video card or USB adapter, monitor, USB mouse and USB keyboard. These are not included with the BeTwin software and must be installed separately.

Step 1.

Install the additional PCI or PCI-Express video card.



- (i) Ground yourself by touching the metal chassis of the computer with your fingers.
- (ii) Shut down your computer, switch off the power and unplug it from the electrical outlet. Remove the cover from the computer and locate an available PCI or PCI-E slot.
- (iii) Remove the PCI or PCI-Express video card from its anti-static bag.
- (iv) Insert the PCI or PCI-Express video card into the PCI or PCI-E slot gently until it sits securely into place. Secure the chrome bracket of the PCI or PCI-Express video card to the computer. Ensure that no other cards have been accidentally pushed out of their slots.
- (v) Put the case back onto your computer.
- (vi) Connect the second monitor cable to the VGA connector of the PCI or PCI-Express video card.
- (vii) Plug the power cable back to the electrical outlet before power on your computer.

Step 2.

Upon the power-on of the Host PC, boot-up display should appear on the Host PC's monitor screen. Otherwise, go into the Host PC's BIOS/CMOS Setup to select the option to boot up from AGP or PCI-Express VGA first.

Eg. The following are examples where different types of PCs have different options to boot from the AGP or PCI-Express VGA first. If you are not sure if your PC has such an option, kindly refer to your PC's documentation or contact your PC Manufacturer's Technical Support.

- a. Under the BIOS/CMOS Setup options selection, select "Integrated Peripherals"
 ← "Init Display First", then select the option "AGP" or "PEG".
- b. Under the BIOS/CMOS Setup options selection, select "BIOS Features Setup"
 ← "VGA Boot from", then select the option "AGP" or "PEG".
- c. Under the BIOS/CMOS Setup options selection, select "Integrated Peripherals"
 ← "Init Display First", then select the option "Enabled".

Step 3.

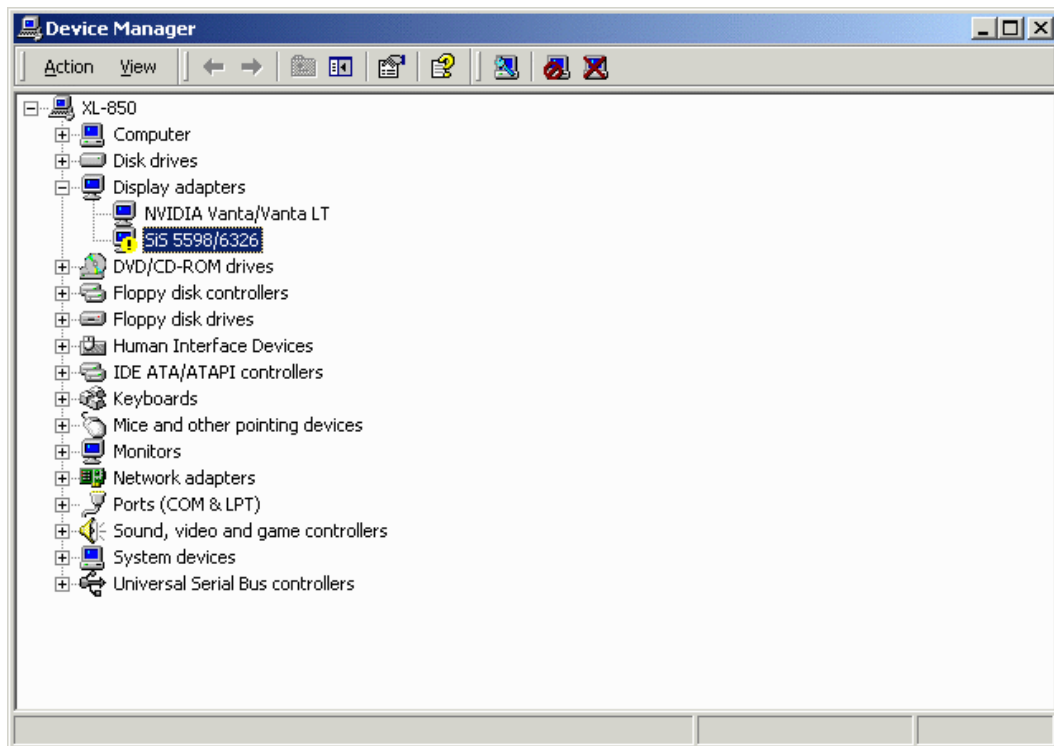
Windows will now detect the video card and ask for the Windows disk (or driver disk supplied with the video card). Refer to the VGA User Manual to direct you through this portion on the installation.

Step 4.

In some cases, Windows may detect the video card and install with the built-in Windows drivers automatically without prompting for the Windows disk (or driver disk supplied with the video card).

NOTE: Please re-install the video drivers (from driver disk supplied with the video card or download the latest version from the vendor's web site) if you are seeing a yellow exclamation mark under "Display Adapters" in the Device Manager. Refer to the instructions under the section "**Installing the Video Drivers...**" to direct you through this portion of the installation.

To verify if there is any device drivers conflict, right-click on the "My Computer" icon in Windows desktop and select "properties". Next, select the "Hardware" tab in the system properties and click on the "Device Manager" button.



Step 5.

After successfully installing the PCI /PCI-Express video card / USB video adapter, by default the Multiple Display Monitor feature is disabled. To enable the Multiple Display Monitor feature of the PCI or PCI-Express video card, follow the instructions under the section "**Enabling the Multiple Display Monitor feature...**".

Step 6.

After enabling the Multiple Display Monitor feature of the PCI /PCI-Express video card/ USB video adapter, the monitor connected to the PCI / PCI-Express card / USB video adapter should now display the same background (color and pattern) as the Host monitor. You may drag your mouse all

the way to the right, the mouse cursor should now appear on the Station monitor. This means that the Multiple Display Monitor feature is working correctly. If you cannot see this, please contact the video card manufacturer for assistance.

Step 7.

Connect the USB mouse and USB keyboard to the computer following the manufacturer's instructions.

Step 8.

Windows will now detect the USB equipment and may ask for Windows disk (or USB driver disk supplied with the USB equipment.). Refer to the instructions supplied with the mouse and keyboard to direct you through this portion on the installation.

- It is possible at this point that Windows has already detected and installed the new hardware properly and may not request any additional drivers.

Step 9.

The USB mouse and USB keyboard can be tested by its effect on the host screen.

- You may verify the working status of the keyboard by pressing the Windows key. The start menu should be displayed.
- You may verify the working status of the mouse by moving it. The mouse cursor should move.
- **If the mouse and keyboard do not work properly, please contact the manufacturer of those devices for assistance.**

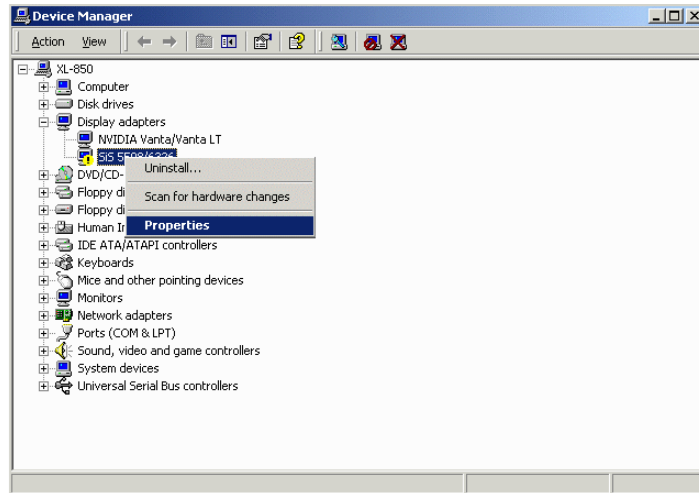
At this point the video card or video adapter, monitor, USB mouse and USB keyboard should be working properly with Windows. You may now install the BeTwin software.

4.2. Installing the Video Drivers for Windows 2000 Professional

Follow the instructions below for installation of the video drivers if your personal computer is running Windows 2000 Professional.

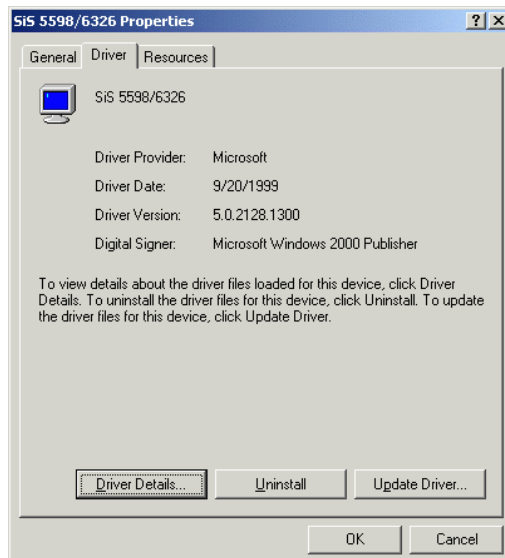
Step 1.

Right-click on the conflicting device under the “Display Adapters” and select “Properties”.



Step 2.

You should see a dialogue box similar to the one below. Select the “Driver” tab and click on the "Update Driver..." button to proceed.



Step 3.

Follow the instructions in the Upgrade Device Driver Wizard to re-install the video drivers. Click on "Next" to proceed.



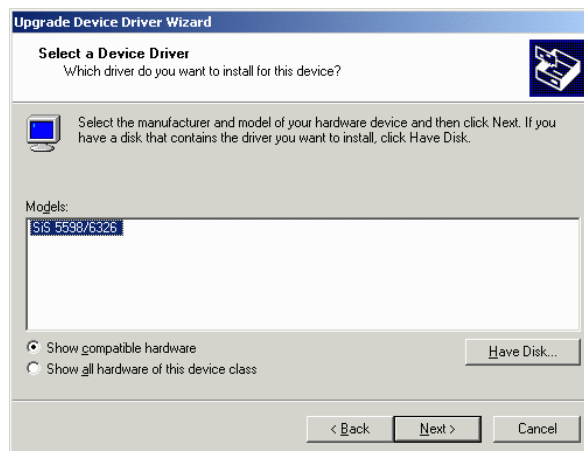
Step 4.

You should now see a screen that looks like the one below. Select the option "Display a list of the known drivers..." and click on the "Next" button.



Step 5.

You should now see a dialogue box similar to the one below. Insert the video driver disk into your floppy or CD-ROM drive. Click on "Have Disk..." since the driver is located in the disk drive.



Step 6.

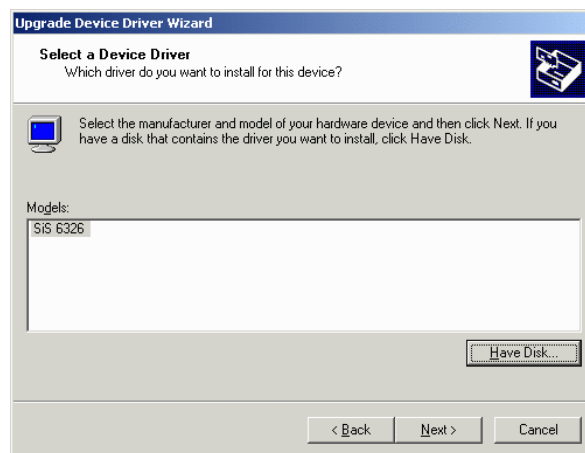
You should now see a dialogue box titled "Install From Disk". You may choose to "Browse" the video driver disk to look for the correct path or just type in the files directory as shown. Then click on the "OK" button.

Assumption: Your CD-ROM drive designator is D: and you are using the SiS6326 video card. The latest SiS6326 VGA driver supporting Windows 2000 Multiple Display Monitor feature is located in D:\VGA\SiS6326



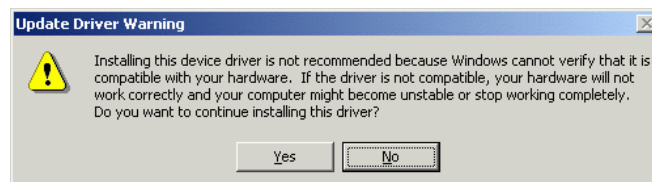
Step 7.

You should now see a dialogue box titled "Select a Device Driver". Select the model "SiS 6326" and click on "Next" to proceed.



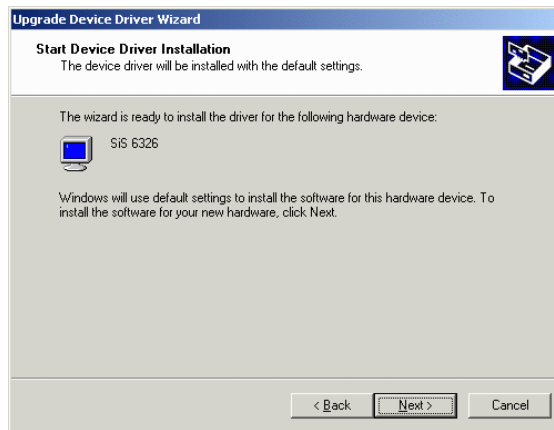
Step 8.

You should now see a screen that looks like the one below. Click on "Yes" to proceed.



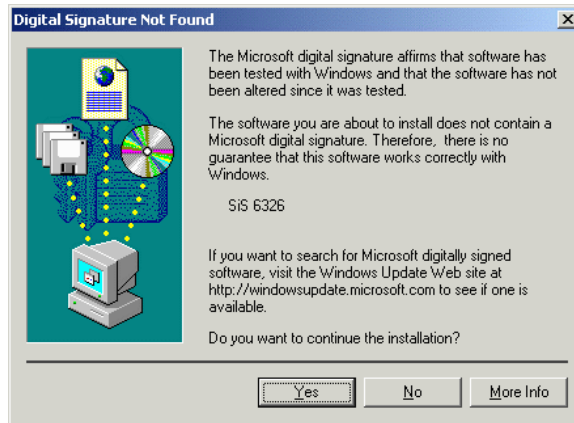
Step 9.

You should now see a dialogue box similar to the one below. Click on the "Next" button.



Step 10.

You should now see a screen that looks like the one below. Click on "Yes" to proceed.



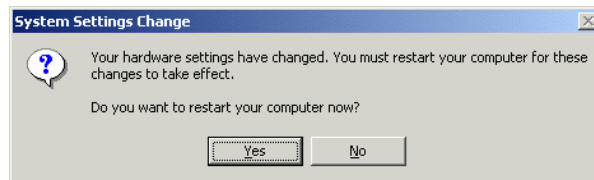
Step 11.

Once Windows 2000 has copied the information from the video driver disk, you should see a screen that looks like the one below. Click on "Finish" to proceed.



Step 12.

You will be prompted to restart your computer. Remove the video driver disk from the CD-ROM drive. Click on the “Yes” button to restart. Your computer will reboot and you will next see the Windows 2000 desktop screen.

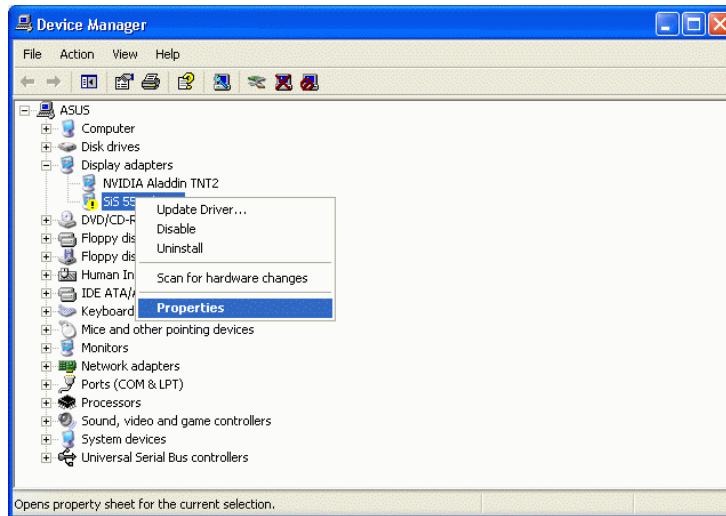


4.3. Installing the Video Drivers for Windows XP Professional (32-bit) or Home Edition

Follow the instructions below for installation of the video drivers if your personal computer is running Windows XP Professional (32-bit) or Home Edition.

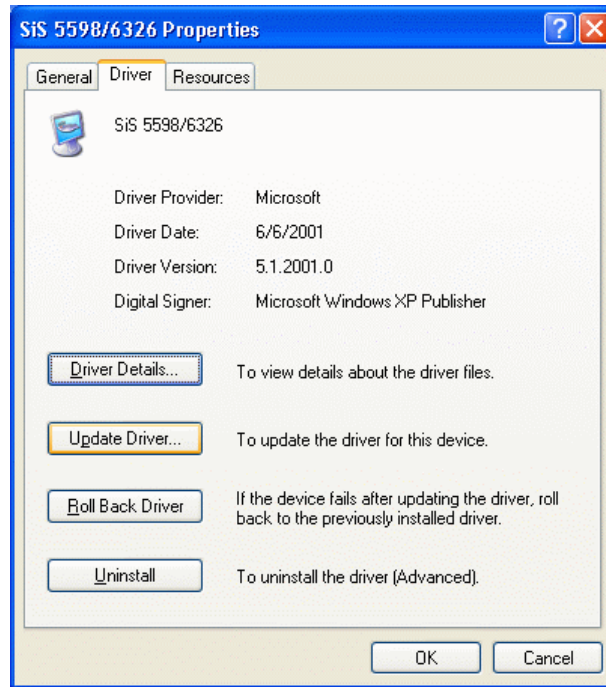
Step 1.

Right-click on the conflicting device under the “Display Adapters” and select “Properties”.



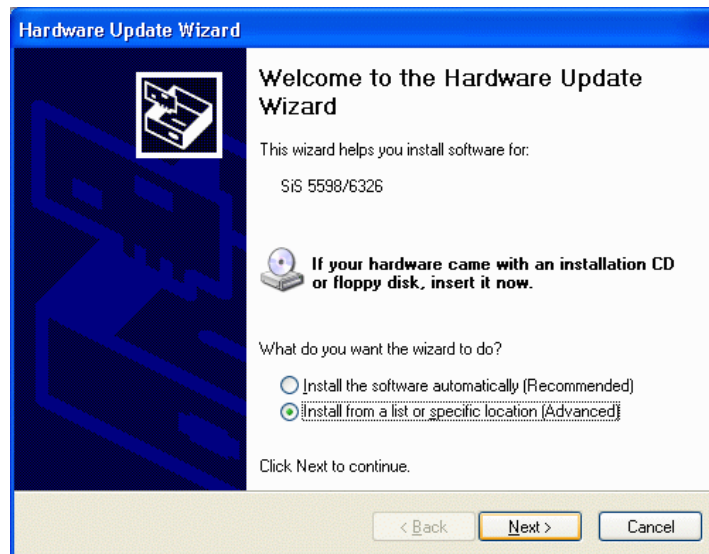
Step 2.

You should see a dialogue box similar to the one below. Select the “Driver” tab and click on the "Update Driver..." button to proceed.



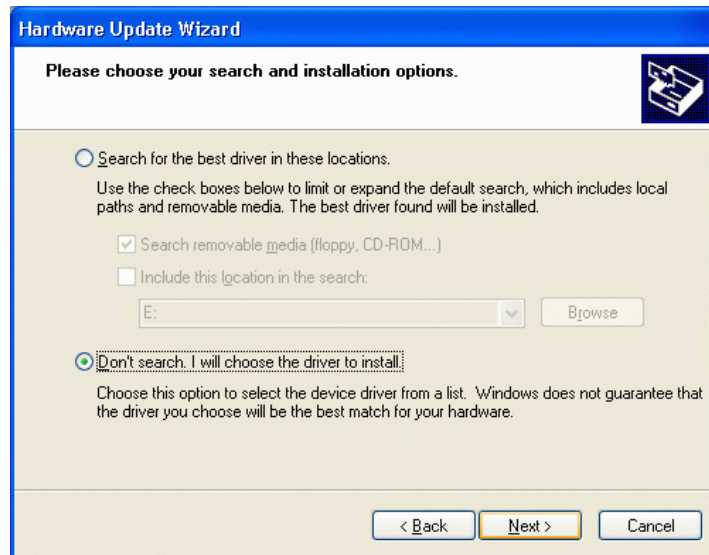
Step 3.

Follow the instructions in the Hardware Update Wizard to re-install the video drivers. Select the option “Install from a list...” and click on the “Next” button.



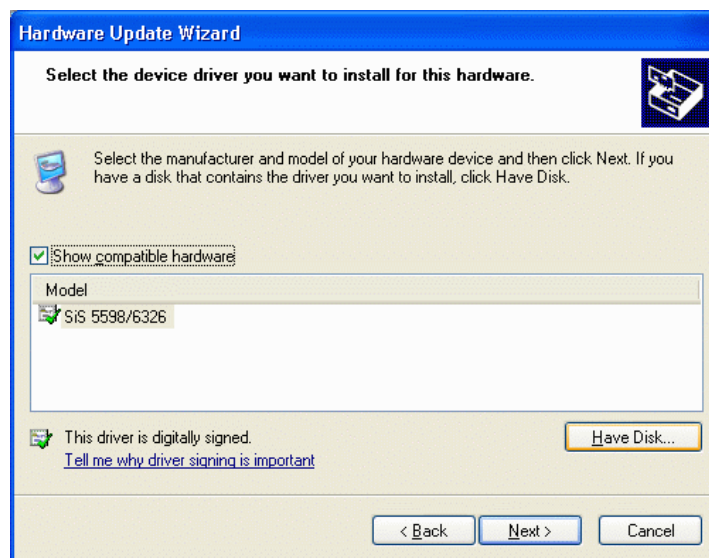
Step 4.

You should now see a screen that looks like the one below. Select the option “Don’t search...” and click on the “Next” button.



Step 5.

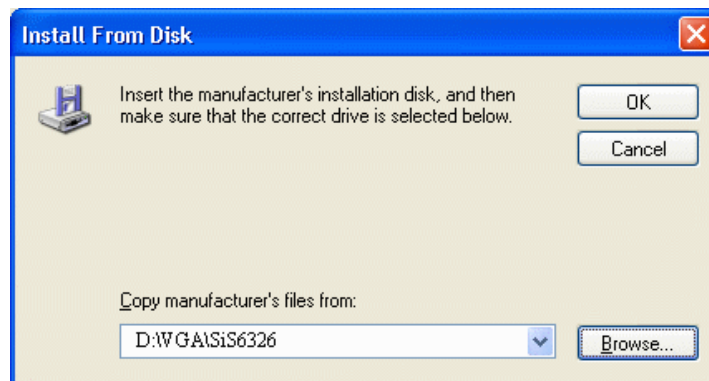
You should now see a dialogue box similar to the one below. Insert the video driver disk into your floppy or CD-ROM drive. Click on "Have Disk..." since the driver is located in the disk drive.



Step 6.

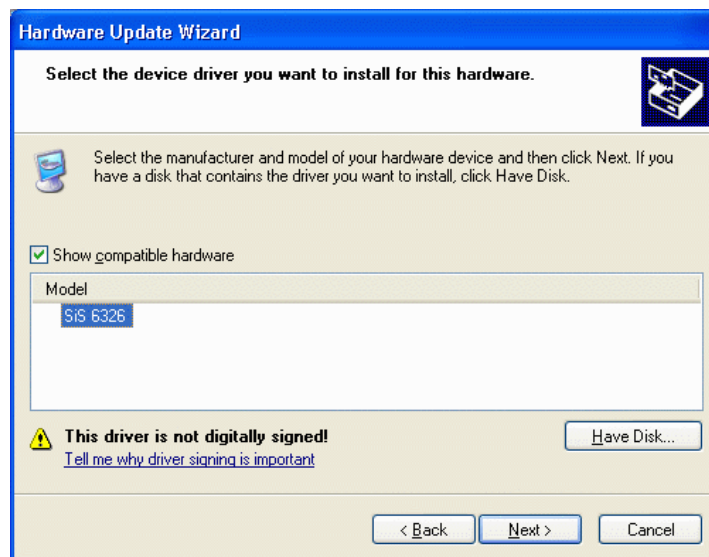
You should now see a dialogue box titled “Install From Disk”. You may choose to "Browse" the video driver disk to look for the correct path or just type in the files directory as shown. Then click on the “OK” button.

Assumption: Your CD-ROM drive designator is D: and you are using the SiS6326 video card. The latest SiS6326 VGA driver supporting Windows XP Multiple Display Monitor feature is located in D:\VGA\SiS6326



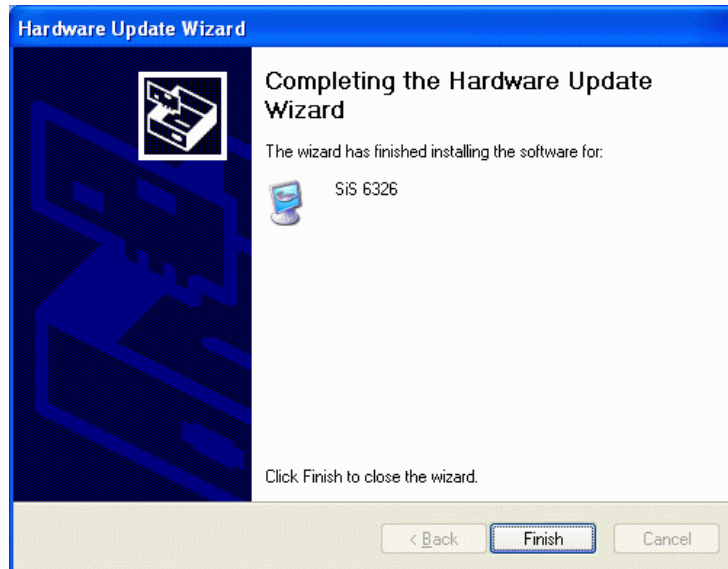
Step 7.

You should now see a dialogue box titled "Select the Device Driver". Select the model "SiS 6326" and click on "Next" to proceed.



Step 8.

Once Windows XP has copied the information from the video driver disk, you should see a screen that looks like the one below. Click on "Finish" to proceed.



Step 9.

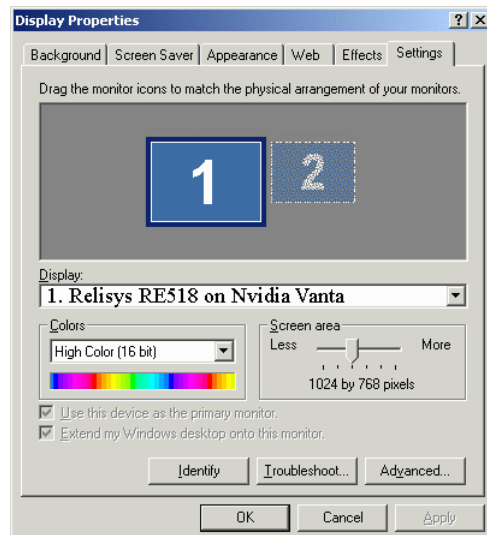
You will be prompted to restart your computer. Remove the video driver disk from the CD-ROM drive. Click on the “Yes” button to restart. Your computer will reboot and you will next see the Windows XP desktop screen.

4.4. Enabling the Multiple Display Monitor feature under Windows 2000 Professional

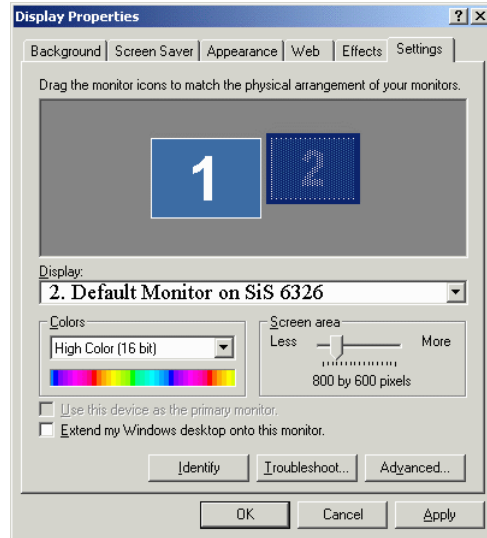
After successfully installing the PCI or PCI-Express video card, by default the Multiple Display Monitor feature is disabled. To enable the Multiple Display Monitor feature of the PCI or PCI-Express video card under Windows 2000 Professional, follow the instructions below:

Step 1.

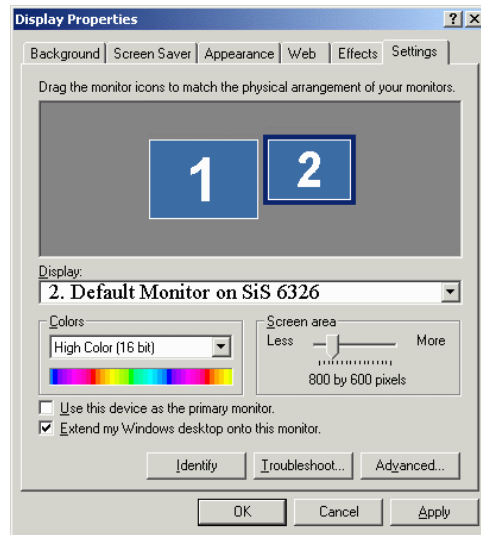
- Go to Windows Control Panel, double click on the Display icon and click on the Settings tab. The next message box to appear will provide the options for enabling the Multiple Display Monitor feature of the PCI or PCI-Express video card.



- Click on the second monitor under the “Drag the monitor icons to match the physical arrangement of your monitors” section. Under the “Display” option, it will show the name of the PCI or PCI-Express video card.



- To enable the Multiple Display Monitor feature of the PCI or PCI-Express video card, check the “Extend my Windows desktop onto this monitor” box.



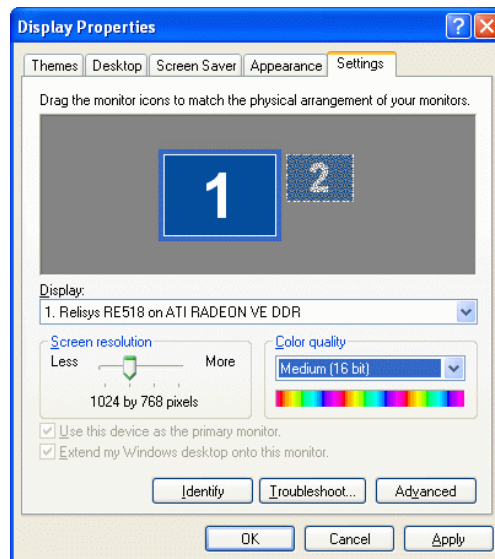
- You may change the “Colors” and “Screen area” options for the PCI or PCI-Express video card.
- Click the “OK” button.
- The monitor connected to the PCI or PCI-Express video card should now display the same background (color and pattern) as the Host monitor. You may drag your mouse all the way to the right, the mouse cursor should now appears on the Station monitor. This means that the Multiple Display Monitor feature is working correctly. If you cannot see this, please contact the video card manufacturer for assistance.

4.5. Enabling the Multiple Display Monitor feature under Windows XP Professional (32-bit) or Home Edition

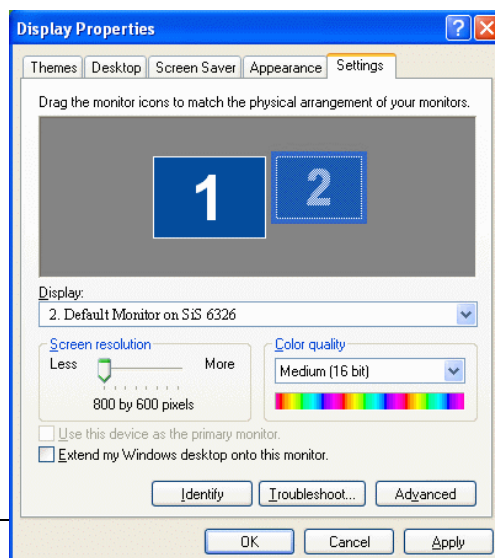
After successfully installing the PCI /PCI-Express video card /USB video adapter, by default the Multiple Display Monitor feature is disabled. To enable the Multiple Display Monitor feature of the PCI /PCI-Express video card / USB video adapter under Windows XP Professional (32-bit) or Home Edition, follow the instructions below:

Step 1.

- Go to Windows Control Panel, select the option “Appearance and Themes”. Double click on the Display icon and click on the Settings tab. The next message box to appear will provide the options for enabling the Multiple Display Monitor feature of the PCI /PCI-Express video card/USB video adapter



- Click on the second monitor under the “Drag the monitor icons to match the physical arrangement of your monitors” section. Under the “Display” option, it will show the name of the PCI /PCI-Express video card/USB video adapter.



- To enable the Multiple Display Monitor feature of the PCI /PCI-Express video card/USB video adapter, check the “Extend my Windows desktop onto this monitor” box.



- You may change the “Colors” and “Screen area” options for the PCI /PCI-Express video card/USB video card.
- Click the “OK” button.
- The monitor connected to the PCI/PCI-Express video card/USB video adapter should now display the same background (color and pattern) as the Host monitor. You may drag your mouse all the way to the right, the mouse cursor should now appears on the Station monitor. This means that the Multiple Display Monitor feature is working correctly. If you cannot see this, please contact the video card manufacturer for assistance.

4.6. Installing the BeTwin Software

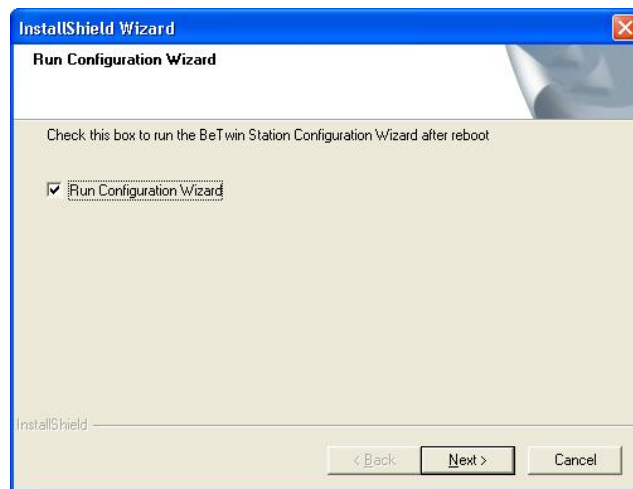
The BeTwin software should only be installed *after* the hardware has been successfully installed and tested . At this point, the PCI /PCI-Express video card/USB video adapter Multiple Display Monitor feature should work as described above and the additional USB mouse and keyboard should both be working properly with Windows.

You are now ready to install the BeTwin software.

It is necessary to first download the BeTwin software from the www.thinsoftinc.com web site. Once this file is saved onto your hard disk, locate it and double-click the filename, setup.exe.

Step 1.

- Double-click on the My Computer icon. Double-click on the C: drive icon. Double-click on the BeTwin Download folder. Double-click on the Setup icon (the one with the picture of a computer monitor with a box in front of it).
- Follow the instructions on the screen.
- Depending on what Windows options have already been installed, on some systems the BeTwin installation may require additional files from the Windows CD so be sure to have the Windows CD handy when installing BeTwin.
- You should see a screen that looks like the one below during the software installation. Ensure that you have checked the box to run the BeTwin Station Configuration Wizard after system reboots.



- Restart the computer after successfully installing the BeTwin software and video drivers (only applicable to Windows 2000 Professional).

NOTE: For Windows 2000 Professional systems, your computer will reboot twice. This is normal while BeTwin setup is configuring drivers.

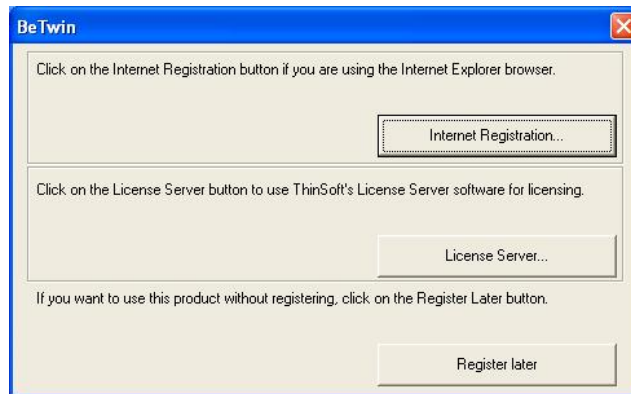
- Follow the instruction on the screen. Click OK to proceed with the Configuration Wizard.

- Select OK with the Keyboard you wish to use at the respective station.
- If prompted, click OK with the Mouse you wish to use at the station.
- When the Configuration Wizard is completed, you will be prompted to restart Windows. Click OK.

Congratulations! You have now fully installed the BeTwin software and configured the system.

Step 2.

- After the system reboots, click on Start\Programs\BeTwin to launch BeTwin Control Center.
- The next message box to appear will provide options for registering your BeTwin software.



- If you are testing the software, click the “Register later” option. If you have decided to register your Be Twin software, click the Internet Registration option if using Internet Explorer. Your computer will then be connected to the registration website which will provide instructions for registration.

Note: The BeTwin Control Center will appear immediately after the registration dialog box has been closed.

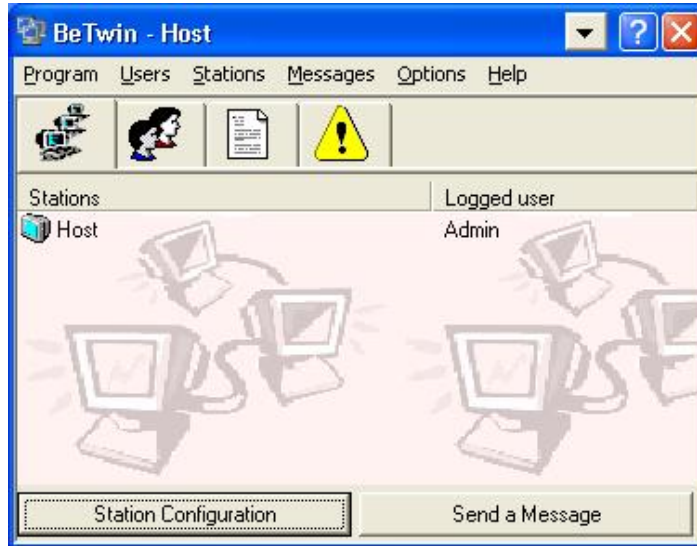
Also please note that uninstalling and re-installing the BeTwin software will result in the expiration of the free time trial. If the BeTwin software is uninstalled and re-installed on the same computer, it will be necessary to register before BeTwin can work.

4.7. Configuring the BeTwin Station Using Configuration Wizard

If you have not run the BeTwin Station Configuration Wizard during the software installation, or if your hardware configuration has changed, you can still run the Configuration Wizard from the BeTwin Control Center.

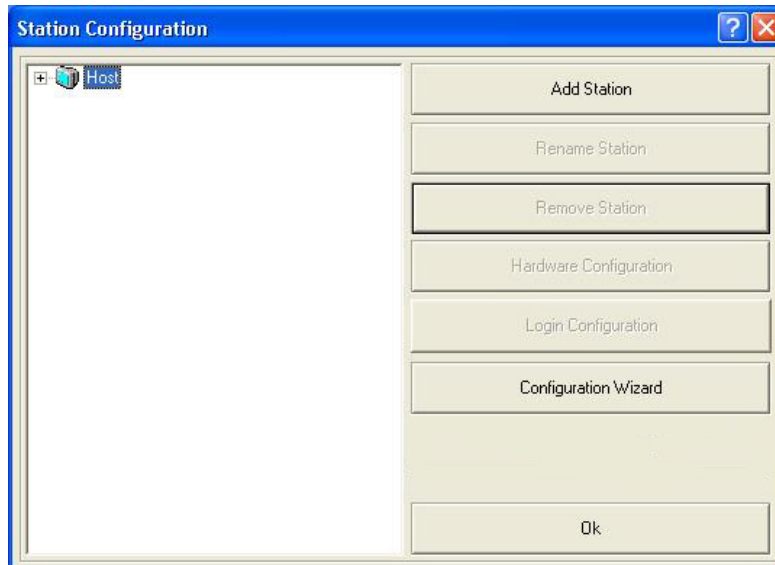
Step 1.

Double click on the **BeTwin** icon to open Control Center. On the opening screen, click on **STATION CONFIGURATION**.



Step 2.

The "Configuration Wizard" feature enables BeTwin to auto-assign the USB mice and keyboards to their respective workstations. To auto-assign the USB audio speakers, you need to connect the peripherals (USB mouse, keyboard and speakers) of each workstation to its USB Hub respectively. Click on **CONFIGURATION WIZARD**.



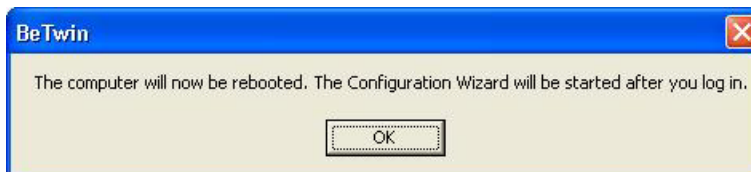
Step 3.

You should see a window similar to the one below. Click OK to disable BeTwin, reboot the system, and start the Configuration Wizard.



Step 4.

Click OK to reboot the computer.



Step 5.

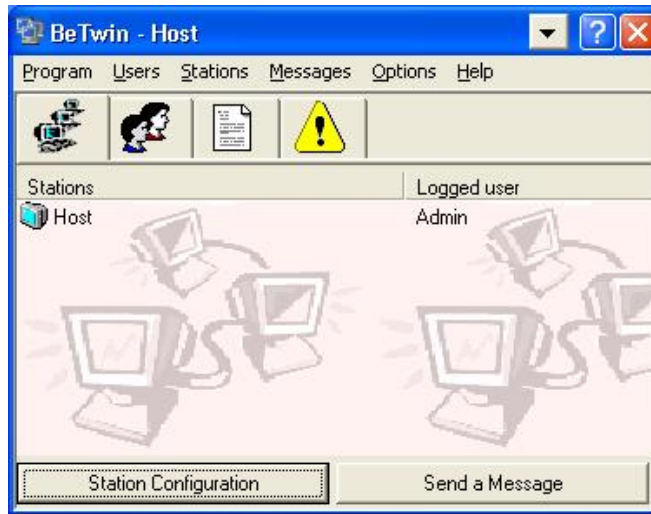
- Follow the instruction on the screen. Click OK to proceed with the Configuration Wizard.
- Select OK with the Keyboard you wish to use at the respective station.
- If prompted, click OK with the Mouse you wish to use at the station.
- When the Configuration Wizard is completed, you will be prompted to restart Windows. Click OK.

4.8. Configuring the BeTwin Station Manually

For most BeTwin installations, running the Configuration Wizard is sufficient for configuring the system. Optionally, you can configure the system manually, or you can use manual configuration to change the hardware assignments created by the Configuration Wizard. To assign the hardware to each workstation manually,

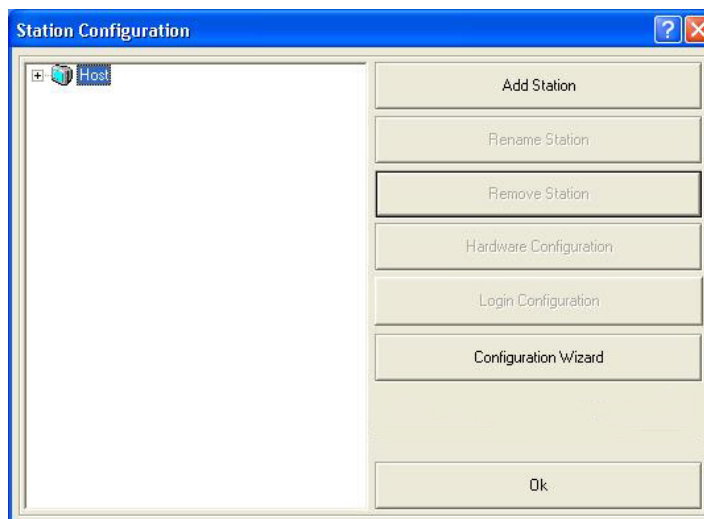
Step 1.

Double click on the **BeTwin** icon to open Control Center. On the opening screen, click on **STATION CONFIGURATION**.

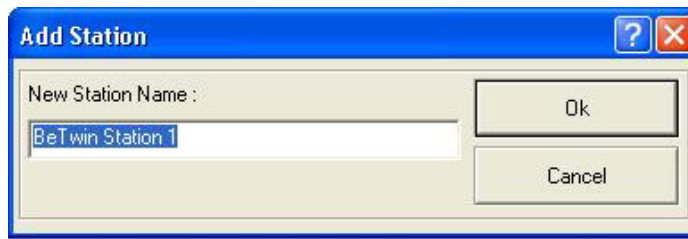


Step 2.

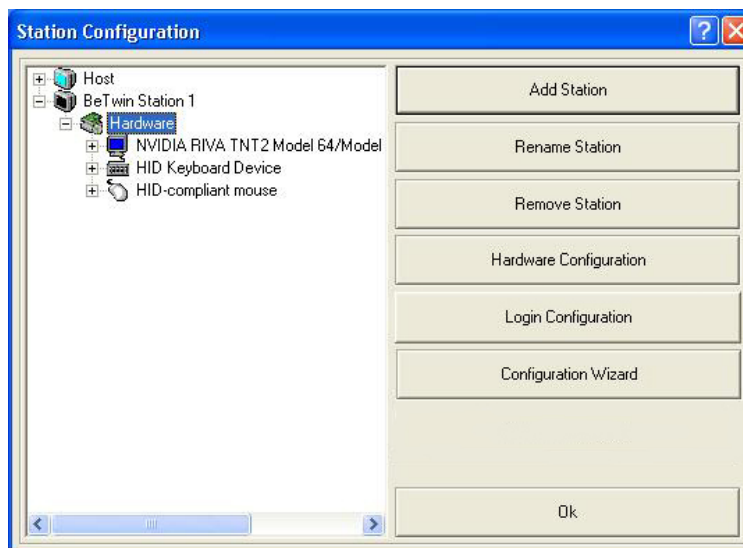
- You should see a window similar to the one below. Click on **ADD STATION**.



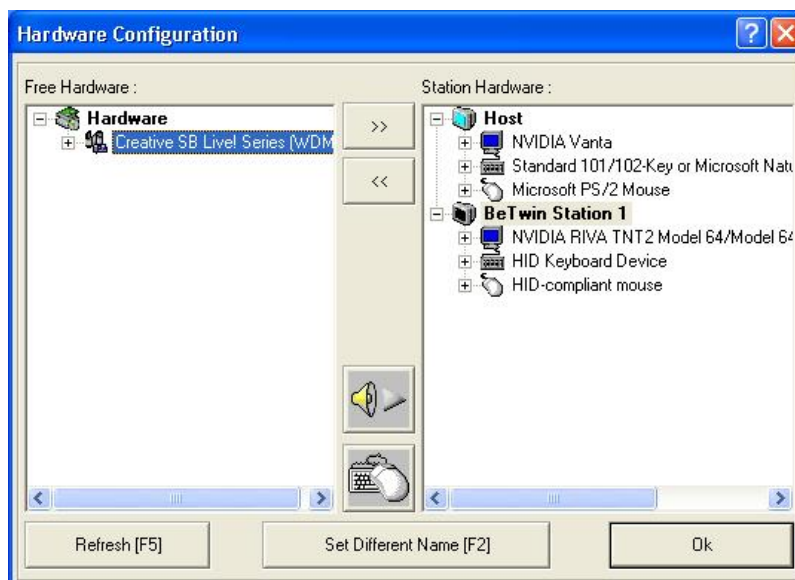
- Rename the station or leave the name as “BeTwin Station”. You can also change the name later. **Click OK**



- **Double click** on **BETWIN STATION**. Click on the “Hardware” option to highlight it.



- **Click** **HARDWARE CONFIGURATION**. Now select the hardware to be used for station.



- ❖ Note: The display, mouse and keyboard will already have been selected for the station. Each station must have a video card, mouse and keyboard. In addition, audio, joystick or other hardware may be assigned.
 - ❖ Note: Some computers equipped with an Intel 810/815 built-in display adapter do NOT have a BIOS option to force that adapter to be the primary display and will need to assign the Intel 810/815 display adapter to the station and use the added PCI or PCI-Express adapter as the host display.
- To add a piece of hardware to a station, highlight the item by clicking on it in the “Free Hardware” window, then click on the “>>” button. You will then see the hardware appear in the “Station Hardware” window.
 - To remove a piece of hardware from a station, click on the item in the “Station Hardware” window. Click on the “<<” button, and it will move from the “Station Hardware” to the “Free Hardware” window.
 - When the station hardware is configured correctly, click on “OK”. This will return you to the “Station Configuration” windows. Click on “OK” again.
 - When prompted to restart Windows, click on “OK”.



USING THE LOCATOR BUTTONS – Please see next page

Step 3.

After the computer has rebooted

- The BeTwin station is ready for use.
- Double click on **BETWIN** icon to open control center.

4.9. Logging onto the station automatically under Windows 2000 Professional

The “Login Configuration” feature enables user to specify the username and password to use at an individual BeTwin station to automatically log on the station. User can also specify a program to run automatically.

The Host station is managed using the TweakUI program, downloadable from <http://www.microsoft.com/networkstation/downloads/PowerToys/Networking/NTTweakUI.asp>

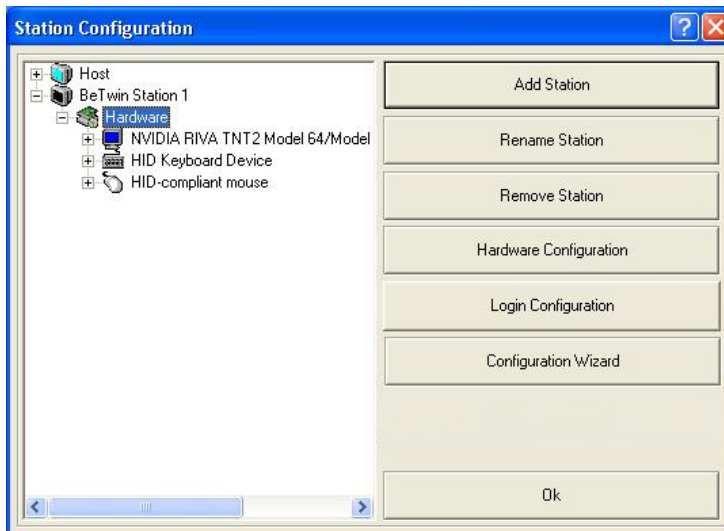
Step 1.

Double click on the **BeTwin** icon to open Control Center. On the opening screen, click on **STATION CONFIGURATION**.



Step 2.

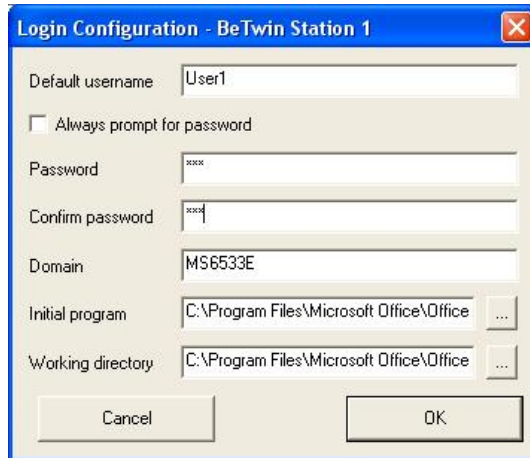
You should see a window similar to the one below. Click on **LOGIN CONFIGURATION**.



Step 3.

Enter the default username and password to use at an individual BeTwin station and deselect the “Always prompt for password” check box. You can also specify a program to run automatically under the **I**nitial Program and **W**orking Directory.

Note: The usefulness of setting the working directory will depend on the application being run.



Step 4.

- On the Windows desktop, select Start menu button => Settings => Control Panel => Users and Passwords.
- Click the Advanced tab.
- In Secure Boot Settings, deselect the “Require users to press Ctrl+Alt+Delete before logging on” check box.
- Reboot the computer.



4.10. Logging onto the station automatically under Windows XP Professional (32-bit) or Home Edition

The “Login Configuration” feature enables user to specify the username and password to use at an individual BeTwin station to automatically log on the station. User can also specify a program to run automatically.

The Host station is managed using the TweakUI program, downloadable from <http://www.microsoft.com/windowsxp/pro/downloads/powertoys.asp>

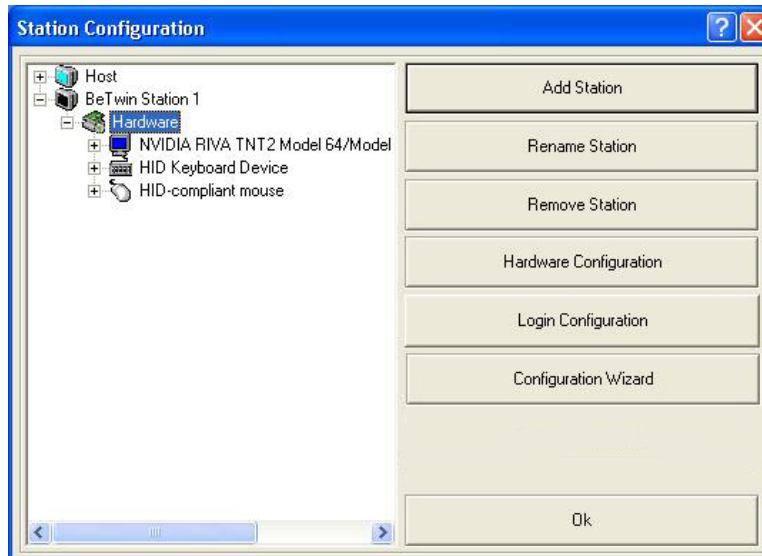
Step 1.

Double click on the **BeTwin** icon to open Control Center. On the opening screen, click on **STATION CONFIGURATION**.



Step 2.

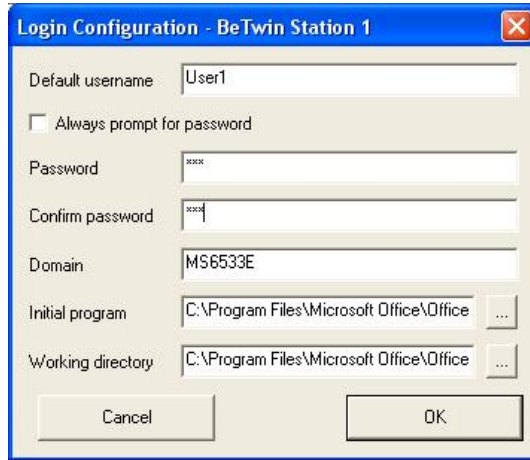
You should see a window similar to the one below. Click on **LOGIN CONFIGURATION**.



Step 3.

Enter the default username and password to use at an individual BeTwin station and deselect the “Always prompt for password” check box. You can also specify a program to run automatically under the **Initial Program** and **Working Directory**.

Note: The usefulness of setting the working directory will depend on the application being run.



Step 4.

The step is only applicable if your computer is part of a network domain. You must be logged on as an administrator or a member of the Administrators group on the computer in order to complete this procedure.

- On the Windows desktop, select Start menu button => Settings => Control Panel => User Accounts.
- Click the Advanced tab.
- In Secure logon, deselect the “Require users to press Ctrl+Alt+Delete” check box.
- Reboot the computer.



4.11. Using the Locator Buttons

Locator Buttons is only applicable if you are configuring the system manually, or using the manual configuration to change the hardware assignments created by the Configuration Wizard. If there is more than one BeTwin station it can be confusing determining which mouse, keyboard or sound device should be assigned to each station. Using the locator buttons can help ease this confusion.

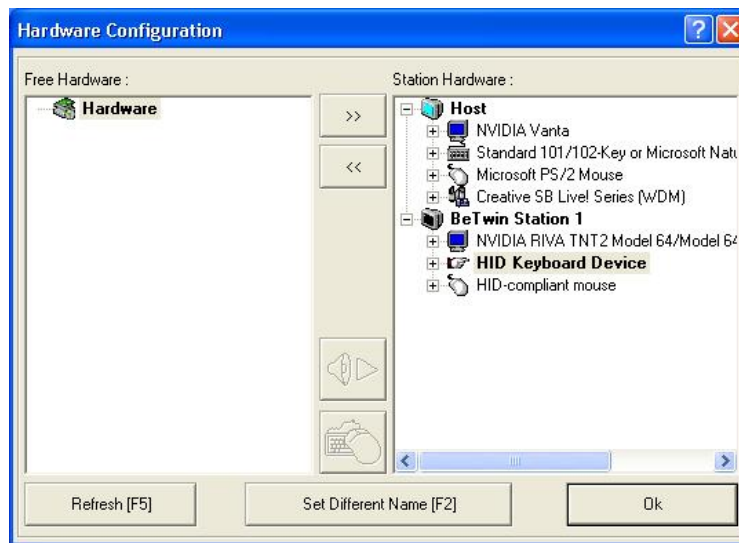
- ❖ Note: To use the locator buttons, BeTwin must be disabled. Click on Start/ Program Files/ BeTwin/Options/ Set Configuration/ Deactivate BeTwin to disable it.

Make sure BeTwin is enabled after devices have been assigned to each station. Click on Start/ Program Files/ BeTwin/Options/ Set Configuration/ Activate BeTwin to enable it.

4.11.1. Keyboard/Mouse Locator



To locate a particular peripheral, first click the keyboard/mouse locator button and then press either a key on any USB keyboard or a button on any USB mouse. The display in the Hardware Configuration screen will indicate which keyboard or mouse has been activated. Once identified, using the Set Different Name utility will make organizing the peripherals easier.



In the above picture, the station1 keyboard is being indicated.

4.11.2. Sound Device Locator



To use the Sound Device Locator, first click to highlight a sound device in the Hardware Configuration screen which will cause the Sound Locator button to un-gray. Clicking the locator button will cause a sound to play from the speakers connected to that device.

- ❖ Note: The Sound Locator is designed primarily for locating USB sound devices.

4.12. Using the BeTwin Control Center

The BeTwin Control Center can be used to manage BeTwin hardware and software options. It allows you to manage users on the system. It also provides tools to assist you in troubleshooting any problems.

The Control Center runs in four modes – Stations, Users, Messages and Eventlog. The four buttons are used to select the mode. Each mode has a different “face” designed to assist you to do your work.



4.12.1. Station Mode

When the Control Center starts, it is in Station mode. If you are in another mode, you can select Station mode by clicking on the Station button



Station mode is used to configure a station and send a message to a station.

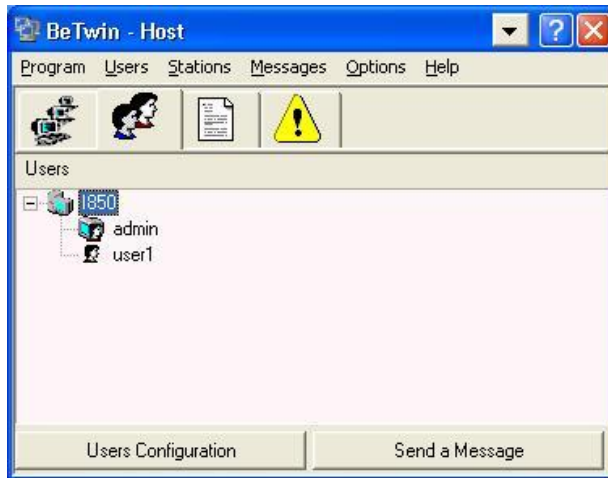


4.12.2. User Mode

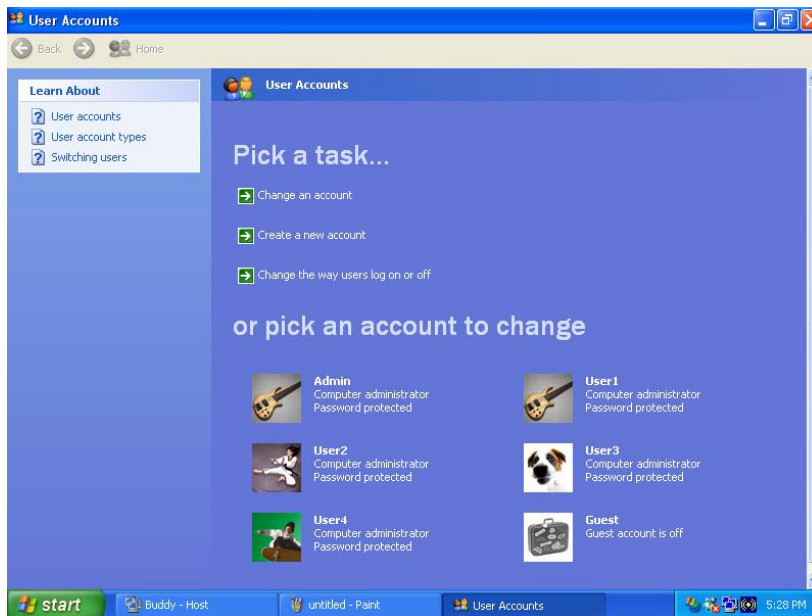
User mode is selected by clicking on the user button.



User mode is used to add, remove or customize each user's profile.



Clicking on the Users Configuration option invokes the Windows User Applet that is used to add, delete or customize user profile settings.



❖ Note: You must have the administrative privileges in order to use the Windows User Applet.

For more information regarding the Windows User Applet, please see Windows help. Any changes made to the user profiles will not take effect until the system is restarted.

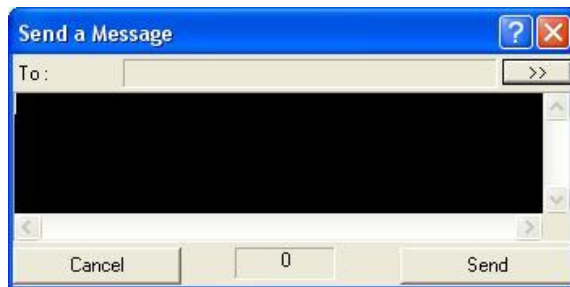
4.12.3. Message Mode


Message Mode is selected by clicking on the message button



Message mode is used to send messages to another user or to check messages.

Clicking the Send a Message option produces the message box.



Clicking the arrow:  allows for selecting where the message will be sent.



4.12.4. Eventlog Mode

Eventlog mode is selected by clicking on the eventlog button



Eventlog mode is used to display eventlog messages for troubleshooting purposes. Only events relating to the BeTwin software are displayed.

4.12.5. Menu Options

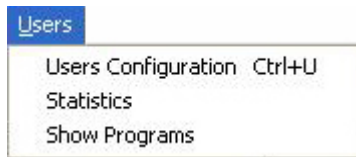
Additional options are available from the menu bar at the top of the Control Center.



The **Program** menu allows for exiting the BeTwin Control Center or for shutting down Windows.



The **Users** menu has several features.



Users Configuration brings up the Windows User Applet.

Statistics displays a utility that monitors system resource use.

Show Programs displays all tasks running on both host and all stations.

The **Stations** menu allows entry into Station Mode to configure a station.



The **Messages** menu allows access to Message Mode as well as to Eventlog Mode.

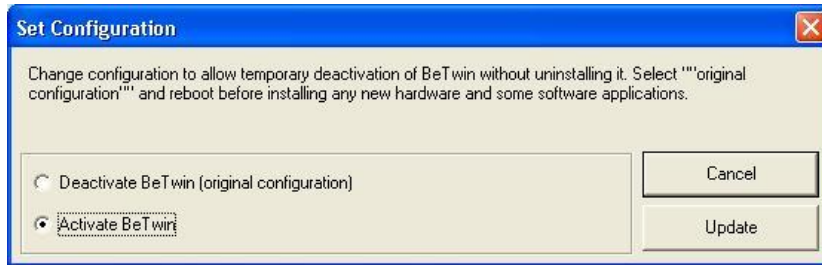


The **Options** menu can be used to select different languages for the BeTwin Control Center if desired.



The **Set Configuration** selection on the **Options** menu is used to disable the BeTwin software for testing purposes. It is also recommended that the BeTwin software be disabled prior to any hardware changes are made to the system. It is also necessary to disable the BeTwin software (and reboot) prior to either uninstalling BeTwin or before updating the BeTwin software to a newer version.

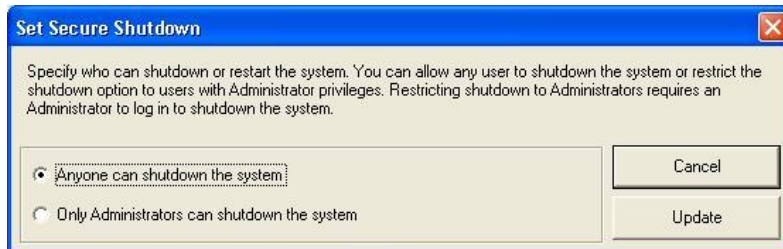
When selected, the **Set Configuration** option presents the following options:



A reboot is required before either selected option will take effect.

The **Set Secure Shutdown** selection on the **Options** menu is used to modify Windows shutdown availability. It can be configured to allow any user to shutdown the system or restrict the shutdown option to users with Administrator privileges. Restricting shutdown to Administrators requires a user with administrator privileges to log in to shutdown the system.

When selected, the **Set Secure Shutdown** option presents the following options:



The Security Policy Settings/ User Accounts in Windows need to be configured accordingly when the option “Only Administrators can shutdown the system” is selected.

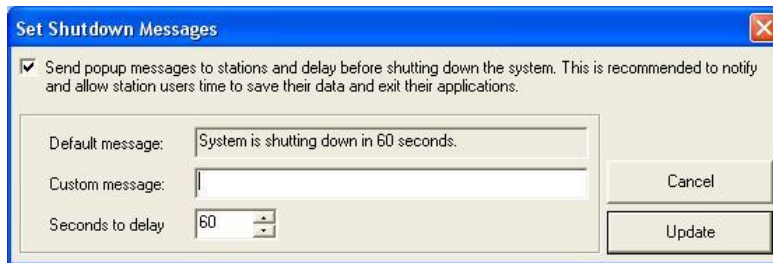
To configure the Security Policy Settings in Windows 2000 Professional, follow the instructions under the section “Shutting Down Windows in Windows 2000 Professional”.

To change the User Accounts Settings in Windows XP Professional (32-bit) or Home Edition, follow the instructions under the section “Shutting Down Windows in Windows XP Professional (32-bit) or Home Edition”.

A reboot is required before either selected option will take effect.

The **Set Shutdown Messages** selection on the **Options** menu allows users to customize the shutdown message sent to the BeTwin stations when Start/Shutdown is selected.

When selected, the **Set Shutdown Messages** option presents the following options:



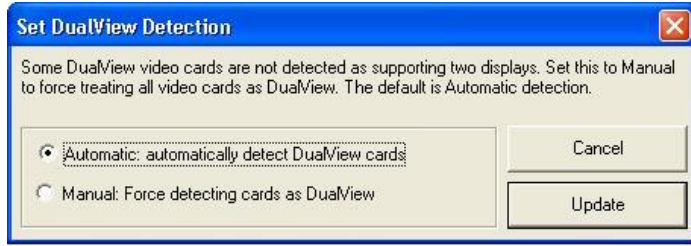
The **Set Remote Desktop** selection on the **Options** menu allows other users to connect remotely to the computer with Remote Desktop Protocol (RDP) client software.

When selected, the **Set Remote Desktop** option presents the following options:



A reboot is required before either selected option will take effect.

The **Set DualView Detection** selection on the **Options** menu is used to configure the way Configuration Wizard detects Dual-Head (or DualView) video graphics (VGA) cards. Some Dual-Head VGA cards may not be detected correctly, users can configure the setting to “Manual: Force detecting cards as DualView” to “force” Configuration Wizard to detect the VGA card as a Dual-Head VGA card. Default is “Automatic: automatically detect DualView cards.”



The **Application Compatibility** selection on the **Options** menu enables or disables the enhanced “Application Compatibility” mode, which may help 16-bit applications to run in multi-user mode. When enabled, it forces users to install application via the Control Panel. Default is “Disabled”.



The **Help** menu provides the BeTwin help Index as well as BeTwin version information.

5. Logging On to the Computer for the First Time

Windows Login

Step 1

Type in the name in the user name box that is created in Windows User Applet.

For more information regarding the Windows User Applet, please see Windows help.

Step 2

Press the tab key and type in the password of the user name that is created in Windows User Applet.

Step 3

Click on the “OK” button.

Note: You can create as many names and passwords as needed in the Windows User Applet. There is no limit on the number of users that may be created.

6. Logging On to the Computer as a Different User

Users may log onto the Computer console or any BeTwin Station under their own name and password to access their own Windows desktop.

Step 1

Click on the Windows “Start” button.

Step 2

1. Click on the “Shutdown...” menu option.
2. Click on the “Log Off” menu option.
3. Click on “OK” to log off.

Step 3

Follow the instructions in “Logging Onto the Computer for the First Time”.

7. Shutting Down Windows in Windows 2000 Professional

The Security Policy Settings in Windows 2000 Professional allow the Administrator to control certain user's privileges, as well as control certain actions allowed for the user.

Administrator can modify numerous security-relevant settings, including users' rights to shut down Windows, by configuring the Local Security Policy.

To view and implement security policy on the computer, you must have Administrator rights to the computer. Administrators can use the following Windows 2000 Professional tools to view and assign user rights for the computer:

1. Click **Start**, and then click **Control Panel** under **Settings**.
2. Double-click **Administrator Tools**.
3. Double-click **Local Security Policy**.
4. Click **Security Settings**, and then click **Local Policies**.
5. In the console tree, click **User Rights Assignment**.
6. In the details pane, double-click the user right you want to change.
7. The default security settings for Windows 2000 can be described by summarizing the permissions granted to four default groups (Administrators, Power Users, Users and Backup Operators) and three special groups. To assign the user rights, put a check in the box next to the user group. In this case, the right in question is **Shut down the system**.

8. Shutting Down Windows in Windows XP Professional (32-bit) or Home Edition

To restrict the shutdown option to users with Administrator privileges, the User Accounts in Windows need to be configured accordingly.

To change the User Accounts Settings in Windows XP Professional (32-bit) or Home Edition:

1. Click **Start**, and then click **Control Panel**.
2. Double-click **User Accounts**.
3. Pick and click on an account to change.
4. Click on the option “**Change the Account Type**”.
5. Select the option “ Limited”, “Standard user” or “Restricted user” and apply the change.
6. Reboot the system.

9. Sharing the Internet Connection in Windows 2000 Professional

9.1. Simultaneous and Independent Sharing

Two people can simultaneously and independently share the Internet, using ONE modem, ONE telephone line and ONE Internet Service Provider (ISP). Each user can send and receive e-mail, browse the World Wide Web, play games, chat and download files simultaneously and independently of each other. Please note, however, that America Online (AOL) does not allow multiple users to check e-mail simultaneously. If using AOL only the host station can connect to AOL and browse the Internet. Once the host is connected to AOL, the station user can bring up Internet Explorer and both users can then browse the Internet.

9.2. Setting up a Dial-up Connection

This section is intended for users who currently use the Internet and already have an account. Under each user's profile, a dial-up connection may be personalized with their own login name and password.

Step 1

Double-click on the "My Computer" icon, generally located in the top left corner of your Windows desktop.

Step 2

Click on the link "Network and Dial-Up Connection".

Step 3

Make sure that the modem is installed in the Computer system and that it is plugged into a telephone wall outlet.

Step 4

Follow the screen instructions.

NOTE: If a successful telephone connection is not made, the user name and password will not be saved until a valid connection has taken place.

10. Sharing the Internet Connection in Windows XP Professional (32-bit) or Home Edition

10.1. Simultaneous and Independent Sharing

Two people can simultaneously and independently share the Internet, using ONE modem, ONE telephone line and ONE Internet Service Provider (ISP). Each user can send and receive e-mail, browse the World Wide Web, play games, chat and download files simultaneously and independently of each other. Please note, however, that America Online (AOL) does not allow multiple users to check e-mail simultaneously. If using AOL only the host station can connect to AOL and browse the Internet. Once the host is connected to AOL, the station user can bring up Internet Explorer and both users can then browse the Internet.

10.2. Setting up a Dial-up Connection

This section is intended for users who currently use the Internet and already have an account. Under each user's profile, a dial-up connection may be personalized with their own login name and password.

Step 1

Double-click on the "My Network Places" icon, generally located in the top left corner of your Windows desktop.

Step 2

Select the option "Set up a home or small office network" under "Network Tasks".

Step 3

Make sure that the modem is installed in the Computer system and that it is plugged into a telephone wall outlet.

Step 4

Follow the screen instructions.

NOTE: If a successful telephone connection is not made, the user name and password will not be saved until a valid connection has taken place.

11. Adding Software or Hardware

Installing new hardware

It is recommended prior to installing any new hardware that the BeTwin software first be deactivated. This is most easily done in the BeTwin Control Center under the Options menu with the utility Set Configuration. Please refer to the “Menu Options” in the section “Using the BeTwin Control Center” of this manual for more detail on the use of this utility.

Installing printers

All printers being installed after the BeTwin software is already operational should be installed on the host workstation followed by a reboot to ensure proper recognition and function from both host and BeTwin workstations.

12. Problem Solving

12.1. General Guidelines

The following are general guidelines which will assist in properly using and maintaining BeTwin

- If you are having trouble getting the additional display to work correctly, make sure that the AGP or PCI-Express adapter is the primary display. It is the primary display if the attached monitor is used while the computer is booting. If it is not, you should change the BIOS option in the BIOS setup screen. When editing the “Primary Display” option. You should make sure that it says “AGP” or “PEG”. Some BIOSs have slightly different wording; some do not have this option. If the BIOS does not have this option, it may be possible for BeTwin to work, however the use of such machines is not recommended.
- Always install and uninstall programs on the Computer when BeTwin stations are not in use.
- Use the Computer’s console (host workplace) when listening to audio from multimedia CD’s or the World Wide Web. Sound is not supported on BeTwin Stations unless USB audio equipment has been installed.
- Try to schedule the use of floppy disk drives for times when the usage of BeTwin is at a minimum. Use of floppy drives may cause momentary slow-downs of the system.
- If a monitor, keyboard or mouse is replaced, shut down then restart the BeTwin Station.
- The BeTwin Station will not work unless all three devices are attached (monitor, keyboard and mouse).
- If an error message occurs when users try to simultaneously initiate a print job, try printing again.
- If a system configuration makes using peripherals difficult from a BeTwin Station, try using the Computer’s console for these functions. For example, if there is trouble printing from a BeTwin Station, try printing from the Host workplace.
- DO NOT shut down the Computer while any games are running.
- Installing the BeTwin software interferes with the Windows Multi-monitor support. Some video drivers “complain” about this interference by displaying the yellow exclamation point next to the appearance of the video adapter (in both the Windows Device Manager as well as the BeTwin Control Center’s Hardware list). Most of the time this is normal and does not prevent BeTwin from working properly.

13. Registration/Licensing

13.1. Demo version

When initially installed, BeTwin runs in “demo mode”. While in demo mode, you can evaluate BeTwin before you purchase. During the evaluation period, you can use up to eight BeTwin stations. After the period, BeTwin will terminate all BeTwin Station(s).

If you do wish to purchase BeTwin, you will need to access our web site to purchase and register the software.

13.2. Internet Registration

Note: Please make sure that the BeTwin Stations are setup and running correctly under demo mode before registering BeTwin.

For Internet Registration, you will need to use Microsoft's Internet Explorer for this purpose.

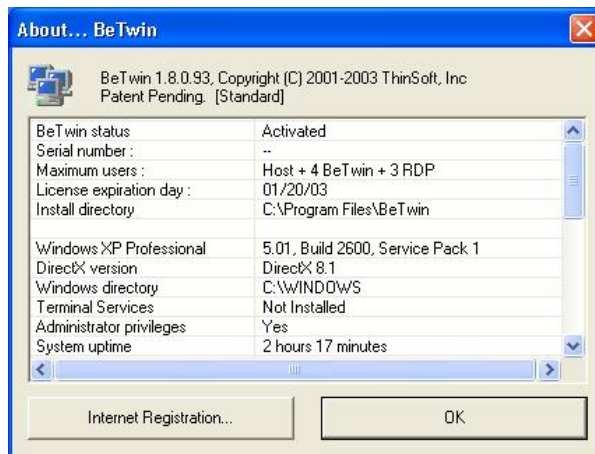
Though the BeTwin Registration menu will pop up at times when you double-click the BeTwin desktop icon to invoke the BeTwin Control Center, it is also possible to get to this Registration menu from the BeTwin Control Center user interface.

Step 1.

Click on BeTwin Control Center\Help\About... BeTwin.

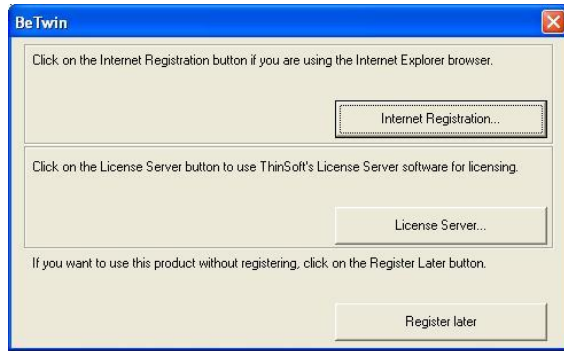
Step 2.

You should see a screen that looks like the one below. Click on the “Internet Registration...” button.



Step 3.

Select the option “Internet Registration...”.



Step 4.

When “Internet Registration” is selected, this will invoke your web browser and link you to the ThinSoft Pte Ltd’s BeTwin Registration web page.

Note: Ensure that you are using the Microsoft’s Internet Explorer as the default browser and take note of the following prior to the purchase or register of BeTwin software.

1. You must purchase/register BeTwin from the computer on which it has been installed (ie NOT from any other computer). Hence, please ensure that you have installed BeTwin software on the computer where you intend to deploy it and make sure BeTwin is working correctly in demo mode and meeting your requirement before proceeding with the purchase/registration process.
2. Make sure you have logged into the computer as a Administrator with full access rights.
3. Within Microsoft Internet Explorer, click on Tools/Internet/Options/Security/Custom Level. Set the "Reset To:" option to "Medium" and click on the Reset button. Next, click on the "OK" button to apply the changes. This is the required Internet Explorer setting and is what the BeTwin Registration page requires in order to successfully work the purchase/registration process
4. When prompted to install and run “ThinSoft Inc. Registration Control and/or the "SheriffNet Module" ActiveX control”, you must click on the “Yes” button to accept and trust content from ThinSoft Inc.

Notes:

When prompted to install and run the "ThinSoft ..." and/or the "SheriffNet Module" ActiveX controls, you must click on the "Yes" button to install and run the ActiveX controls.

Please wait for each page to load completely before proceeding to the next page.

Step 5.

Select the language to register.

Step 6.

There are two options in the next registration page. If your BeTwin software was purchased from a distributor or came installed on your computer, you will have a serial number that will need to be entered in the “Serial Number” field on the web page. Once that is done, click on the “Register & Unlock BeTwin” button.

If you have obtained BeTwin on a demo CD or downloaded the BeTwin software, there is no serial number to be entered, just click the “Create New License & Purchase BeTwin” button.

In either case, the next page will display a form requiring completion; requesting user name and address information, etc. If you are purchasing the BeTwin software, credit card information is also required. Be careful to indicate how many BeTwin stations/licenses are desired, as the purchase price will be computed accordingly.

Step 7.

Once the payment has been approved, clicking on the “Proceed to unlock BeTwin” button will automatically create the unlock code needed. Clicking on the final acceptance button will automatically register your BeTwin software on your computer.

14. Updating BeTwin

If you wish to update your BeTwin software to the most recent version, you can do so by downloading it from our web site.

1. Download the BeTwin demo from <http://www.thinsoftinc.com>. Once this file is saved onto your hard disk, locate it and double-click the filename, setup.exe.
2. You need not have to uninstall the current BeTwin software prior to re-installing the latest BeTwin software.
3. Follow the instructions on the screen.
4. Depending on what Windows options have already been installed, on some systems the BeTwin installation may require additional files from the Windows CD so be sure to have the Windows CD handy when installing BeTwin.
5. Restart the computer after successfully installing the BeTwin software.

You have now successfully updated your BeTwin software to the most recent version.

If you have already registered BeTwin, you will not need to re-register after upgrading the BeTwin software.

15. Technical Support

Technical support offered by ThinSoft Pte Ltd.

BeTwin products must be registered with ThinSoft before technical support may be offered. Registration may be completed by registering online at our World Wide Web site. Free support is offered for sixty (60) days from the date of registration. Our technical staff is available to answer questions, troubleshoot problems and to assist in the installation of BeTwin products. Before requesting technical support, please be prepared to provide information including the date and place of purchase and product serial number (_____).

<http://www.thinsoftinc.com>

ThinSoft Pte Ltd
23 Tai Seng Drive
#06-00
Singapore 535224

Fax: (65) 6289-7308

email: support@thinsoftinc.com

Support hours: 9:00am to 5:00pm local time